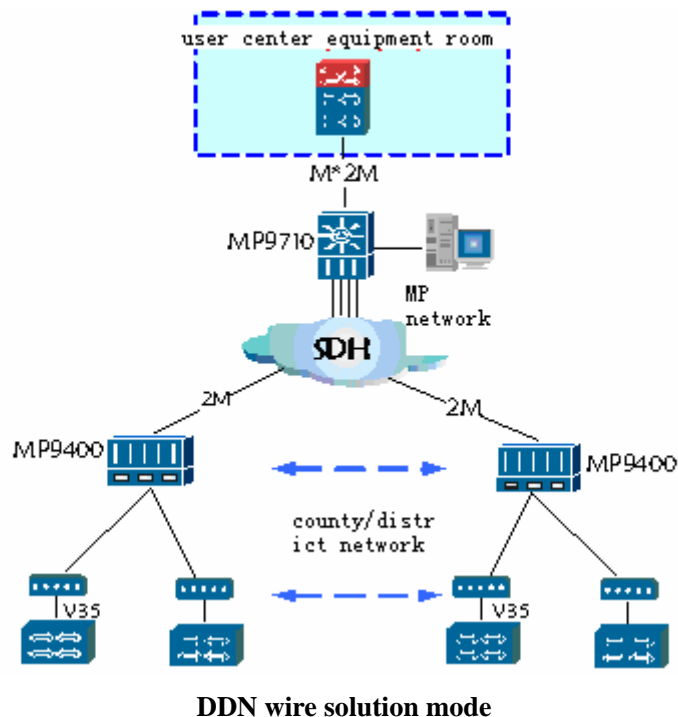


# MaiPu MP9400/MP9710 service for operators

## 1. DDN

At the last of 1990s, in finance and various enterprises special network construction field, it has the high requirement on the data security and efficiency, and DDN this kind of application mode is fit for this kind of network application demand. So each place operator tried their best to construct DDN network, MP9400 and MP9710 became their first choice.

### DDN mode topology chart:



### Feature description of solution:

- User's band width 9.6k-2M, the transparent transmission, has good efficiency and security.
- Abundant service cards for user, flexible access way: MP128 base band MODEM, MP336 frequency band MODEM , GDHSL high speed MODEM and so on, satisfy user's different bandwidth requirement.
- DDN node integrates intersection, transmission, multiplexer and access together, to enhance the whole solution efficiency.
- Flexible data exchange, the timeslot and sub-timeslot of each access card and port can

be exchanged and assigned.

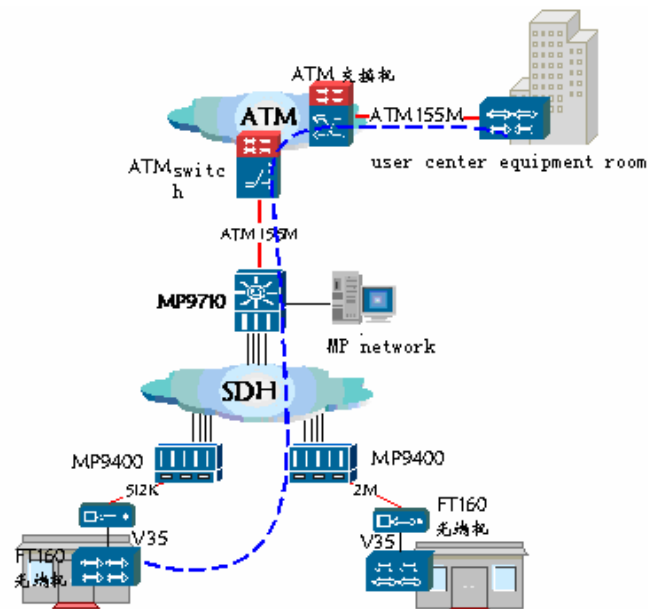
- Stable equipment, support double power source backup and network data backup, and realize the whole network examination and maintenance through network management.

MaiPu DDN product line is fit for special network application requirement of industry customer, and in recent years operator industry user special network construction, has occupied 70% DDN mark share.

## 2. ATM/FR

Frame relay and ATM/FR access way, as the important method of leased line access of great customer, also widely applies to finance, tax and other industry leased line network. In China, ATM/FR network completely established, and now can cover most cities in China, has satisfied various enterprises' need to frame relay business. In order to realize the operators to the users ATM/FR high density access, MaPu Company provide MP9710 multi-services access solution to realize enterprise ATM/FR network.

### ATM/FR solution topology chart:



### Feature description of solution:

- ATM/FR statistic multiplexes switch mode has strong applicability to the big suddenly data quantity enterprise.

- MP9710 multi-services platform TDM, broadband double main line structure most greatly support 385 E1 FR access, which can satisfy the high density access requirement and realize the FR data local switch.
- The rich service cards satisfy the user's multi-service need, ATM 155M card, 32E1, 16E1, 8E1 customer access card, serial card, PDH access card and so on.
- Smartly access method, can adopt FT160 PDH directly connect the user network and so on.
- Have the complete network management card redundancy system and business card redundancy backup system, automatically cut over to backup card when knowing the failure, completely protect the business stability and support wire loop.
- The comprehensive unification network management may manage user's fiber transceiver and so on equipment, which is convenient to network maintenance, and reduce the manpower maintenance const of operator.

### **3. Some customer lists of domestic operator of MaiPu**

Shanghai Telecommunication Co., Ltd  
 Anhui Province Telecommunication Co., Ltd  
 Chongqing Telecommunication Co., Ltd  
 Sichuan Province Telecommunication Co., Ltd  
 Fujian Province Telecommunication Co., Ltd  
 Jiangsu Province Telecommunication Co., Ltd  
 Zhejiang Province Telecommunication Co., Ltd  
 Jiangxi Province Telecommunication Co., Ltd  
 Henan Province Communication Co., Ltd  
 Hebei Province Communication Co., Ltd  
 Shandong Province Communication Co., Ltd  
 Liaoning Province Communication Co., Ltd  
 Jilin Province Communication Co., Ltd

Heilong Jiang Province Communication Co., Ltd

Shanxi Province Communication Co., Ltd

Neimeng Gu Communication Co., Ltd