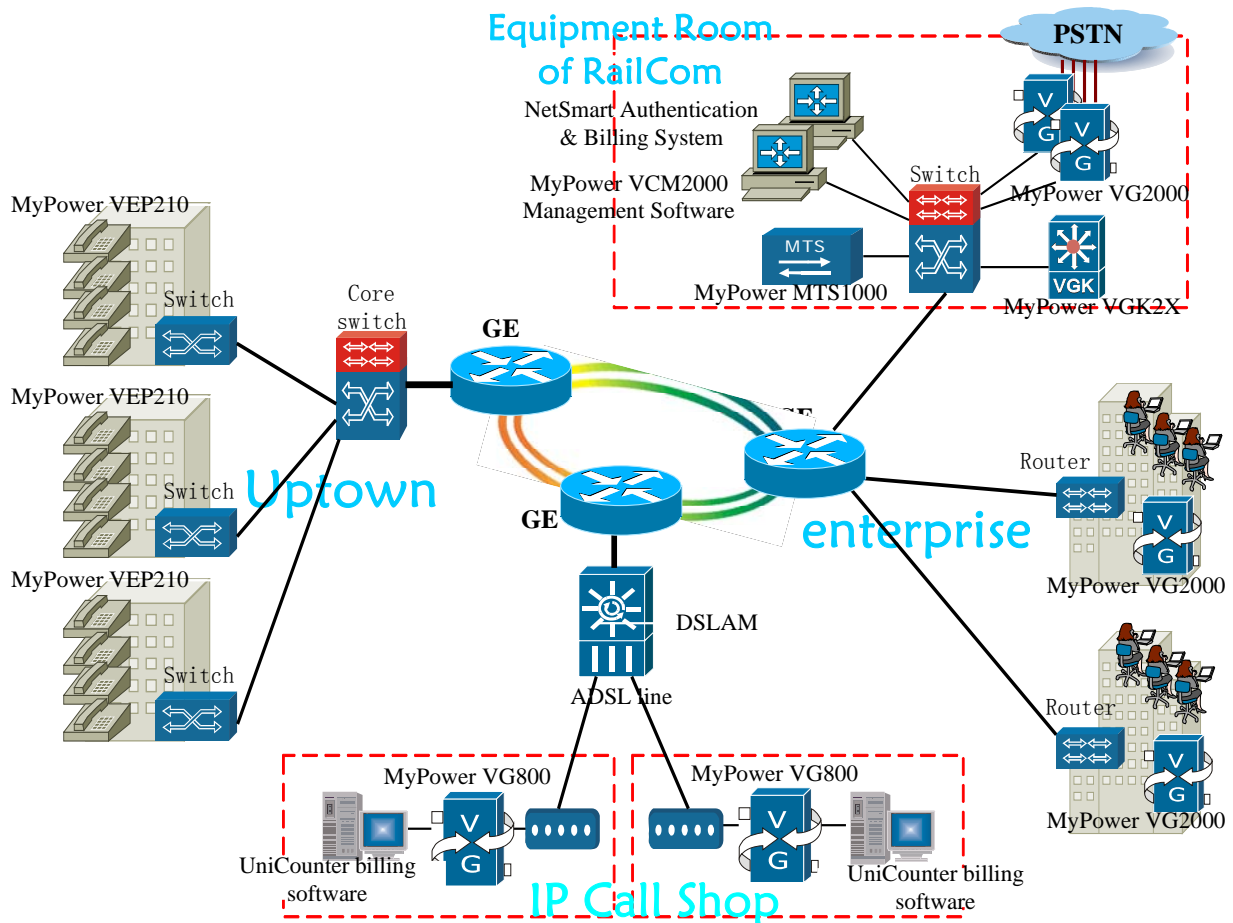


# Maipu solution to the reconstruction project of China TianJin

## RailCom VoIP network.

Introduction: This paper explains Maipu solution to the reconstruction project of China TianJin RailCom VoIP network, which has been finished in 2003.

### 1. Network topology



### 2. Case study

In **central equipment room** of TianJin RailCom, Maipu VoIP series products have been deployed, which are MyPower VGK2X, NetSmart, MyPower VCM2000, MyPower MTS1000 and many MyPower VG2000.



MyPower VGK2X is the intelligence control point in H.323 network, which monitors endpoint and gateway. Together with VCM2000, VGK2X can control the voice terminal according to the configurations, and it is able to provide many management features.

NetSmart is the billing and accounting software for central controlling and monitoring the service operation. NetSmart is very easy to operate, but able to handle the tough billing services.

MyPower VCM2000 is the voice call management platform for the whole IP voice network business, which can monitor

MyPower VG2000 is the voice trunk gateway, which supports ISDN PRI signaling. Several VG2000 can be stacked for trunk application.

In **remote service site**, some IP voice services can be supplied, such as IP call shop service, IP call accessing service for enterprise and uptown. Different devices are deployed for different services.

IP call shop service: MyPower VG800 or VGA600, the mini gateway can be installed in IP call shop. 4~16 FXS ports can be supported by VG800, but only maximum of 8 voice ports supported by VGA600. Maipu UniCounter is the professional billing software for call shop operation.

IP call accessing service for uptown: MyPower VEP210, the IP phone can be provided for discreted residents. And the central NetSmart will keep bill for their calls.

IP call accessing service for enterprise: MyPower VGM6000, VG2000, VG800 or VGA600 can be chosen as the accessing gateway depends on their capacity. VGM6000 supports maximum of 96 voice ports, and VG2000 supports 32 ports, then VGA600 supports 8 ports. The central NetSmart keep the bill for the call from enterprise.

=====  
Edited: July 12, 2005