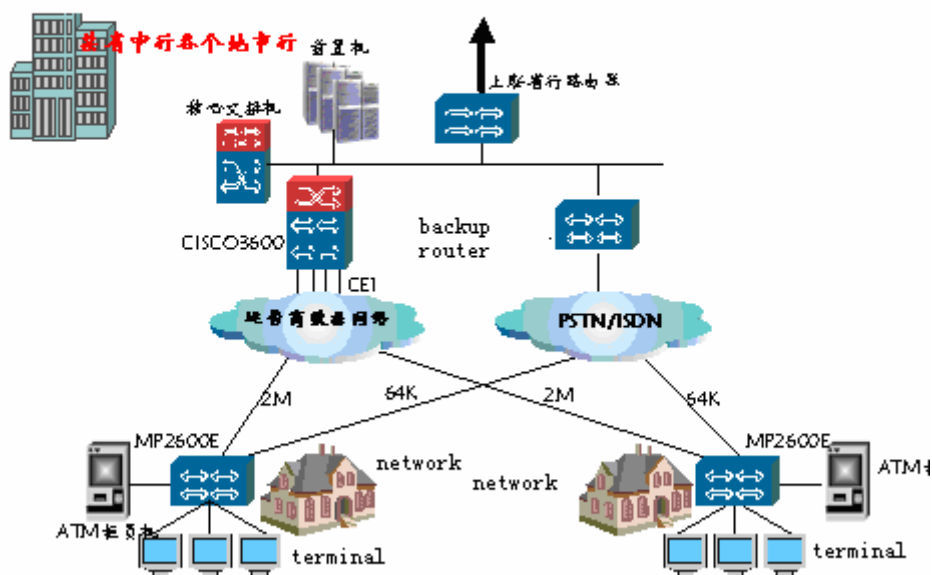


# MaiPu serves for 2M bandwidth and multiple E1 links aggregation network of BOC

## 一、network condition before reconstruction

Before reconstruction, Bank of China has completely realized reconstruction from IP to network, the network uses MP2600E router connecting into L2 branch center through 64K DDN wire, and use Cisco3600 series router as the core business main line aggregation router at L2, realize the aggregation of 30-40 networks, and the network topology is as following:



WTO is coming, which makes the financial industry competition more and more intense, so the enterprise must develop various financial business to attract customer, provide the customer the high quality financial service through advanced network, but the diversification of financial business of course brings the big increase of data flow, so the original 64K bandwidth can not bear such data flow, must accelerate the network bandwidth to 2M, and aggregate with multiple E1 links to satisfy such financial requirement.

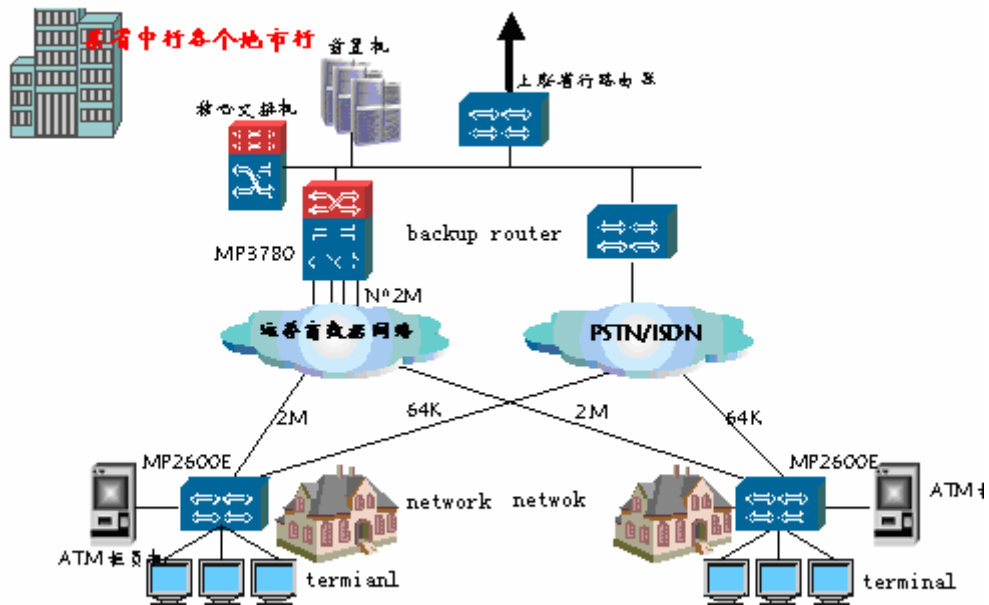
## 二、Network requirement

1、Effective network investment protection: the network equipment investment needs the most reasonable price

performance ratio; meanwhile besides can satisfy the actual network requirement, and can smoothly realize the future much higher bandwidth upgrading aggregation, e.g. 4M/8M/155M;

- 2、 In order to guarantee the non- stop business, L2 network aggregation must have avoiding network crisis ability.

### 三、 Network solution



### 四、 Why choose MaiPu MP3780 router?

- 1、 MP3780 is the middle-terminal router which having the most 2M network, it adopts 155M ATM/CPOS mode, at most can have over 100 2M networks;
- 2、 MP3780 is the highest performance middle-terminal, the throughput reaches 600K-1Mpps, completely supports formidable 2M E1 aggregation ability;
- 3、 MP3780 provides the highest E1 card density, the highest can be 8E1 card, similarly has guaranteed the strong 2M E1 aggregation ability of MP3780;
- 4、 MP3780 is the best network investment protection middle-terminal router, MP3780 provides two kinds of main control card and many kinds of 155M cards (including ATM/POS/CPOS). In addition, MP3780 provides the biggest density of E1, such causes the low average price of each E1 port, saving the customer investment;

5、 About 1000 MaiPu middle-terminal aggregation router has been successfully operated on network, and about 200 have been used overseas, the stability has been successfully confirmed, moreover, MP3780 series router provides double hot backup protocol, and double power source redundancy, and support business card hot slot and main board excessively hot protection technology, effectively guarantee network reliability, which makes the non-stop of business.